

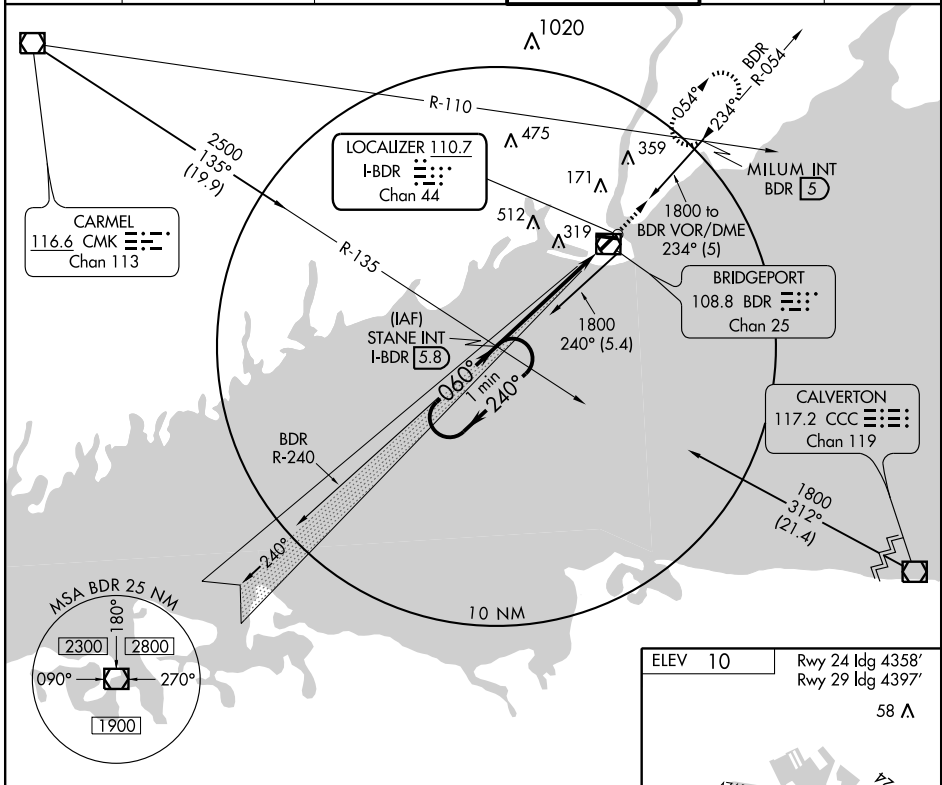
ILS RWY 6

BRIDGEPORT/ IGOR I. SIKORSKY MEMORIAL (BDR)

LOC/DME I-BDR 110.7 Chan 44	APP CRS 060°	Rwy Idg 4677 TDZE 7 Apt Elev 10
---	------------------------	--

MISSED APPROACH: Climb to 1800 via BDR-054 to MILUM Int and hold.

ATIS 119.15	NEW YORK APP CON 124.075 343.65	BRIDGEPORT RADIO 122.2	BRIDGEPORT TOWER* 120.90 (CTAF) 257.8	GND CON 121.9 257.8	CLNC DEL 121.75
-----------------------	---	----------------------------------	--	-------------------------------	---------------------------

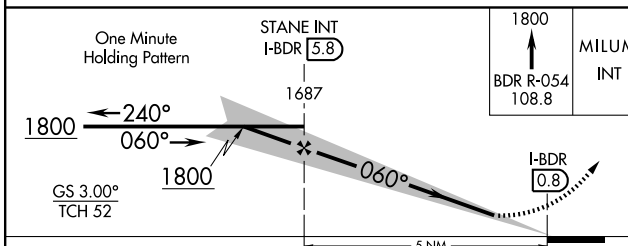
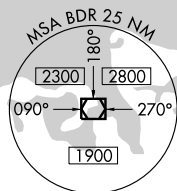


CARMEL
116.6 CMK
Chan 113

LOCALIZER 110.7
I-BDR
Chan 44

BRIDGEPORT
108.8 BDR
Chan 25

CALVERTON
117.2 CCC
Chan 119



ELEV 10	Rwy 24 Idg 4358'	Rwy 29 Idg 4397'
	58 A	
	TWR 88	
	TDZE 7	
	41±	
	060° 5 NM from FAF	
	REIL Rwy 6, 11, 24, and 29	
	HIRL Rwy 6-24 and 11-29	
	FAF to MAP 5 NM	
	Knots	60 90 120 150 180
	Min:Sec	5:00 3:20 2:30 2:00 1:40

CATEGORY	A	B	C	D
S-ILS 6		307 - 1	300 (300-1)	
S-LOC 6		380-1	373 (400-1)	380-1¼ 373 (400-1¼)
CIRCLING	420-1 410 (500-1)	620-1 610 (700-1)	620-1¾ 610 (700-1¾)	820-2½ 810 (900-2½)

ILS RWY 6

NE-1, 04 JUN 2009 to 02 JUL 2009

NE-1, 04 JUN 2009 to 02 JUL 2009